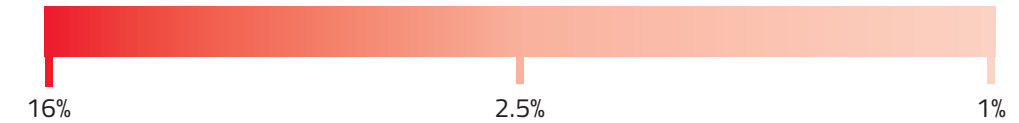
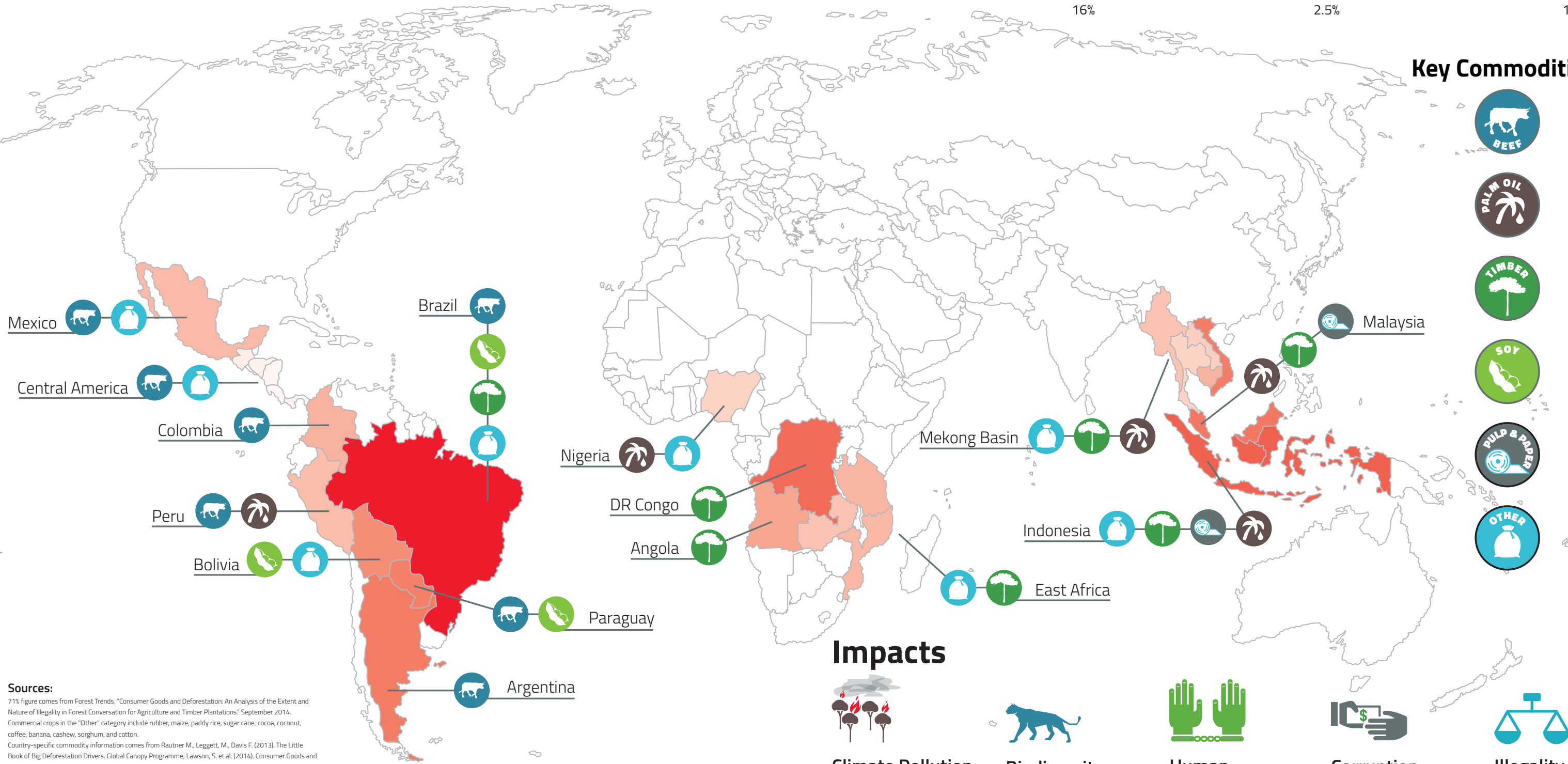


Commercial agriculture drives 71 percent of tropical deforestation

Forest Area Loss as % of Total Tropical Forest Loss, 2010-2012
(darker countries are responsible for a higher percentage of tropical forest loss)



Key Commodities:



Sources:

- 71% figure comes from Forest Trends. "Consumer Goods and Deforestation: An Analysis of the Extent and Nature of Illegality in Forest Conversion for Agriculture and Timber Plantations." September 2014.
- Commercial crops in the "Other" category include rubber, maize, paddy rice, sugar cane, cocoa, coconut, coffee, banana, cashew, sorghum, and cotton.
- Country-specific commodity information comes from Rautner M., Leggett, M., Davis F. (2013). The Little Book of Big Deforestation Drivers. Global Canopy Programme; Lawson, S. et al. (2014). Consumer Goods and Deforestation: An Analysis of the Extent and Nature of Illegality in Forest Conversion for Agriculture and Timber Plantations. Forest Trends; European Commission. (2013). The impact of EU consumption on deforestation: Comprehensive analysis of the impact of EU consumption on deforestation. Study funded by the European Commission, DG ENV, and undertaken by VITO, IIASA, HIVA and IUCN NL.
- 1. Houghton 2013 and Hansen 2013
- 2. <http://www.worldwildlife.org/habitats/forests>
- 3. [http://www.globalwitness.org/sites/default/files/library/Deadly Environment.pdf](http://www.globalwitness.org/sites/default/files/library/Deadly%20Environment.pdf); http://www.forestpeoples.org/sites/fpp/files/publication/2012/05/forest-peoples-numbers-across-world-final_0.pdf
- 4. The status of information on corruption in the forestry sector. 2010. <http://www.u4.no/publications/the-status-of-information-on-corruption-in-the-forestry-sector/>
- 5. <http://link.springer.com/article/10.1007%2Fs11135-011-9513-2>; The political economy of reforestation and forest restoration in Asia-Pacific: Critical issues for REDD+; Biological Conservation, <http://www.sciencedirect.com/science/article/pii/S0006320712001632>; Potential Legality Issues from Forest Conversion Timber, Forest Trends, http://www.forest-trends.org/documents/files/doc_4137.pdf
- 6. Forest Trends. "Consumer Goods and Deforestation: An Analysis of the Extent and Nature of Illegality in Forest Conversion for Agriculture and Timber Plantations." September 2014.

Climate and Land Use Alliance, Disrupting the Global Commodity Business, September 2014.

Impacts



Climate Pollution

Forest loss, mostly for agricultural commodities, is responsible for the same amount of climate pollution as up to a billion passenger vehicles every year.¹



Biodiversity Loss

80 percent of the world's known terrestrial species are found in tropical rainforests. Deforestation destroys the habitat these species depend on.²



Human Rights Abuses

Since 2002, over 900 activists were killed protecting land and environmental rights. 1.6 billion people depend on forests to support their livelihoods.³



Corruption

The "resource curse" of corruption threatens local communities that depend on forest resources, undermines legitimate business, and steals government revenue.⁴ In one example, a major Indonesian forest fund lost \$5.2 billion to corruption throughout the 1990s.⁵



Illegality

49 percent of tropical deforestation is due to illegal conversion for commercial agriculture.⁶